

1031 MARYHILL ROAD, GLASGOW. G20 9AT.

CASTLEHEAD PROPERTIES ARE DELIGHTED TO BRING THIS ONE BEDROOM UPPER FLOOR FLAT TO THE MARKET, SITUATED IN THE MARYHILL AREA OF GLASGOW. THE PROPERTY IS IN GOOD ORDER INTERNALLY AND BENEFITS FROM GAS CENTRAL HEATING AND DOUBLE GLAZING. RESIDENTS' PARKING. SECURE DOOR ENTRY. SITUATED A SHORT WALK FROM THE TOP END OF BYRES ROAD WITH ITS VAST RANGE OF SHOPPING, CAFES, BARS AND RESTAURANTS, AND EASY ACCESS TO PUBLIC TRANSPORT LINKS AND MOTORWAY NETWORKS TO GLASGOW CITY CENTRE AND BEYOND.

- GAS CENTRAL HEATING
- RESIDENTS' PARKING
- IDEAL FIRST TIME PURCHASE
- GREAT TRANSPORT LINKS
- DOUBLE GLAZING
- SECURITY ENTRY
- CLOSE TO ALL LOCAL AMENITIES
- MODERN KITCHEN AND BATHROOM

OFFERS OVER £130,000

1031 MARYHILL ROAD,
GLASGOW. G20 9AT.

OFFERS OVER £130,000

LOUNGE 12' 4" x 13' 1" (3.77M x 3.99M)

GREY CARPET WITH WHITE WALLS. DOUBLE WINDOWS TO THE REAR OF THE PROPERTY OVER LOOKING RESIDENTS PARKING. DOOR GIVING ACCESS TO THE KITCHEN.

KITCHEN 9' 8" x 7' 2" (2.95M x 2.19M)

SAGE COLOURED WALL AND BASE UNITS WITH DARK SPECKLE WORK TOPS, SMALL BREAKFAST BAR. STANDALONE FRIDGE FREEZER, GAS HOB AND ELECTRIC FAN OVEN. CUPBOARD/UTILITY AREA HOUSING WASHING MACHINE. SLATE EFFECT FLOOR TILES WITH MIXED COLOURED SPLASH BACK TILES. WINDOW TO THE REAR OF THE PROPERTY.

ENTRANCE HALL 17' 9" x 3' 3" (5.40M x 1.00M)

GIVES ACCESS TO ALL OTHER APARTMENTS. LIGHT GREY LAMINATED FLOORING WITH WHITE WALLS. TWO STORAGE CUPBOARDS ONE HOUSING THE CONSUMER UNITS AND ELECTRIC METER.

BEDROOM 11' 8" x 9' 5" (3.55M x 2.88M)

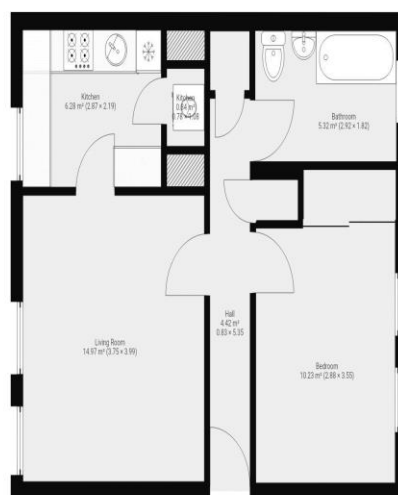
GOOD SIZED DOUBLE BEDROOM. GREY CARPET WITH WHITE WALLS. DOUBLE BUILT IN MIRRORED WARDROBES. WINDOW TO THE FRONT OF THE PROPERTY.

BATHROOM 9' 3" x 6' 1" (2.82M x 1.85M)

WHITE THREE PIECE BATHROOM SUITE. OVERHEAD ELECTRIC SHOWER. WHITE WALL TILES WITH BLACK TOP BORDER TILES. GREY SLATE EFFECT VINYL.

RESIDENTS PARKING

RESIDENTS PARKING AT THE REAR OF THE PROPERTY.



THIS FLOORPLAN IS PROVIDED WITHOUT WARRANTY OF ANY KIND. CAUTION: ANY WARRANTY INCLUDING, WITHOUT LIMITATION, SATISFACTORY QUALITY OR ACCURACY OF DIMENSIONS.

As a regulated business we are required to comply with the "The Money Laundering, Terrorist Financing and Transfer Funds (Information on the Payer) Regulations 2017. Intending purchasers will be asked to produce documentation to satisfy these requirements on acceptance of a formal offer. These will include proof of identification, proof of address and proof of funds to facilitate the purchase including deposit and any loan funds. Your cooperation in this is greatly appreciated.

DISCLAIMER - WHILST WE ENDEAVOR TO MAKE THESE PARTICULARS AS ACCURATE AS POSSIBLE, THEY DO NOT FORM PART OF ANY CONTRACT OR OFFER, NOR ARE THEY GUARANTEED. MEASUREMENTS ARE APPROXIMATE AND IN MOST CASES ARE TAKEN WITH A DIGITAL/SONIC MEASURING DEVICE AND ARE TAKEN AT THE WIDEST POINT. WE HAVE NOT TESTED THE ELECTRICITY, GAS OR WATER SERVICES OR ANY APPLIANCES. PHOTOGRAPHS ARE REPRODUCED FOR GENERAL INFORMATION AND IT MUST NOT BE INFERRED THAT ANY ITEM IS INCLUDED FOR SALE WITH THE PROPERTY. IF THERE IS ANY PART OF THIS THAT YOU FIND MISLEADING OR SIMPLY WISH CLARIFICATION ON ANY POINT, PLEASE CONTACT OUR OFFICE IMMEDIATELY WHEN WE WILL ENDEAVOR TO ASSIST YOU IN ANY WAY POSSIBLE.



OFFERS OVER £130,000